

SHV CONNECTOR

UPC (8 atm) and
GSI (10 atm) geometry

$\frac{26.61}{675.9}$

$\frac{25.09}{637.2}$

$\frac{23.62}{600.0}$ ACT LGTH

$\frac{.87}{22.2}$

$\frac{1.00}{25.4}$

INFORMATION AND DESIGN DISCLOSED HEREIN IS THE PROPERTY OF LND INC. AND ALL PATENT, PROPRIETARY DESIGN, MANUFACTURING, PROCESSING, REPRODUCTION, AND SALES RIGHTS THEREIN ARE RESERVED EXCEPT TO THE EXTENT THAT RIGHTS ARE EXPRESSLY GRANTED BY CONTRACTUAL AGREEMENT. DUPLICATION OR DISCLOSURE TO UNAUTHORIZED PARTIES IS FORBIDDEN WITHOUT EXPRESS WRITTEN PERMISSION. COMPLIANCE WITH CONTRACTUAL AGREEMENTS DOES NOT IMPLY AN INTENT BY LND TO MAKE THIS DOCUMENT AVAILABLE TO OTHERS OR TO THE GENERAL PUBLIC NOR TO ABANDON ANY OF SAID PROPRIETARY RIGHTS.

DRAWN
CHECKED

LND, INC.
OCEANSIDE, NY 11572
DRAWING NO. 252248

TEST SHEET**LND**

CUSTOMER P.O. # 456015NS2012041

LND JOB # 14315-00

GENERAL SPECIFICATIONS

Gas Filling He3, Co2

Gas Pressure(Torr) 6080

Connector Type SHV

Test Circuit 1

ENTRANCE WINDOW SPECIFICATIONS

Material N/A

Areal Density(mg/cm²) N/A

Thickness(inches/mm) N/A

EXIT WINDOW SPECIFICATIONS

Material N/A

Areal Density(mg/cm²) N/A

Thickness(inches/mm) N/A

DATE 01/28/2013

DETECTOR TYPE 252285

SERIAL NUMBER 542057

ELECTRICAL SPECIFICATIONS

Operating Voltage(Volts) 1492

Operating Voltage Range (Volts) 1400-1650

Resolution(%FWHM) 4.72

Source Pu-Be

Plateau Slope(%/100V) <3

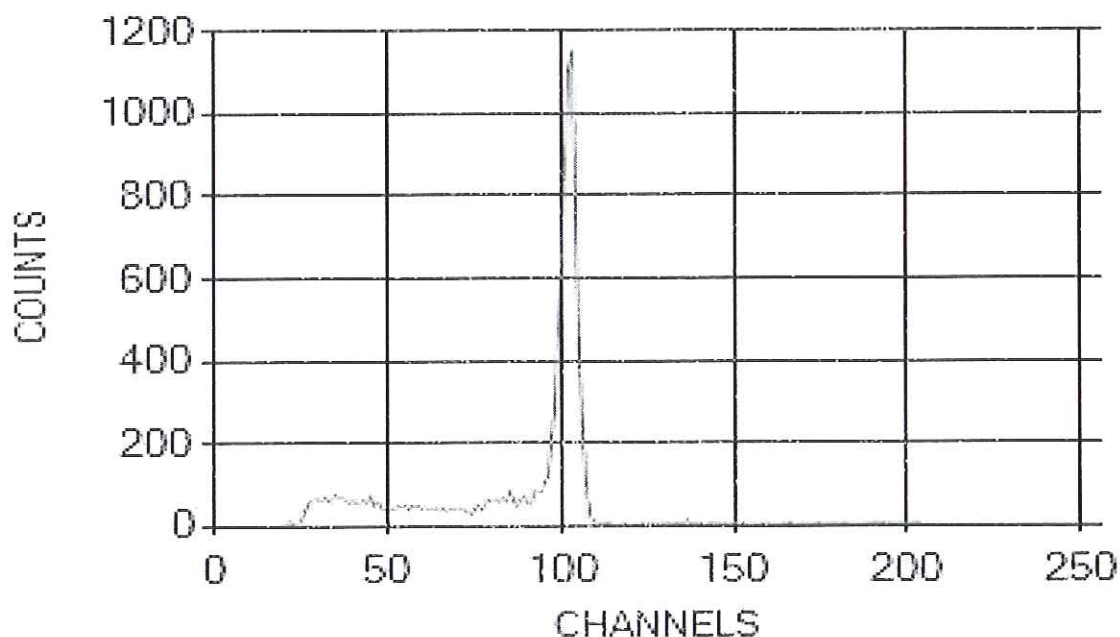
Charge/Pulse 1.0E-13

Pulse Height(Volts)t 1mV

Sensitivity(A/R/Hr) N/A

EQUIPMENTPower Supply
Pre-Amp
Amplifier
MCA
Counter
Oscilloscope
ElectrometerBertan 315
Ortec 142 PC
Ortec 570
Canberra Multiport II
HP 5328A
Hitachi V-212
Keithley 616

Spectrum

**LND****DESIGNERS & MANUFACTURERS OF
NUCLEAR RADIATION DETECTORS**

3230 LAWSON BOULEVARD OCEANSIDE, NY 11572

E-Mail: info@lndinc.com Web Site: <http://www.lndinc.com>

Tel:(516) 678-6141

Fax:(516) 678-6704

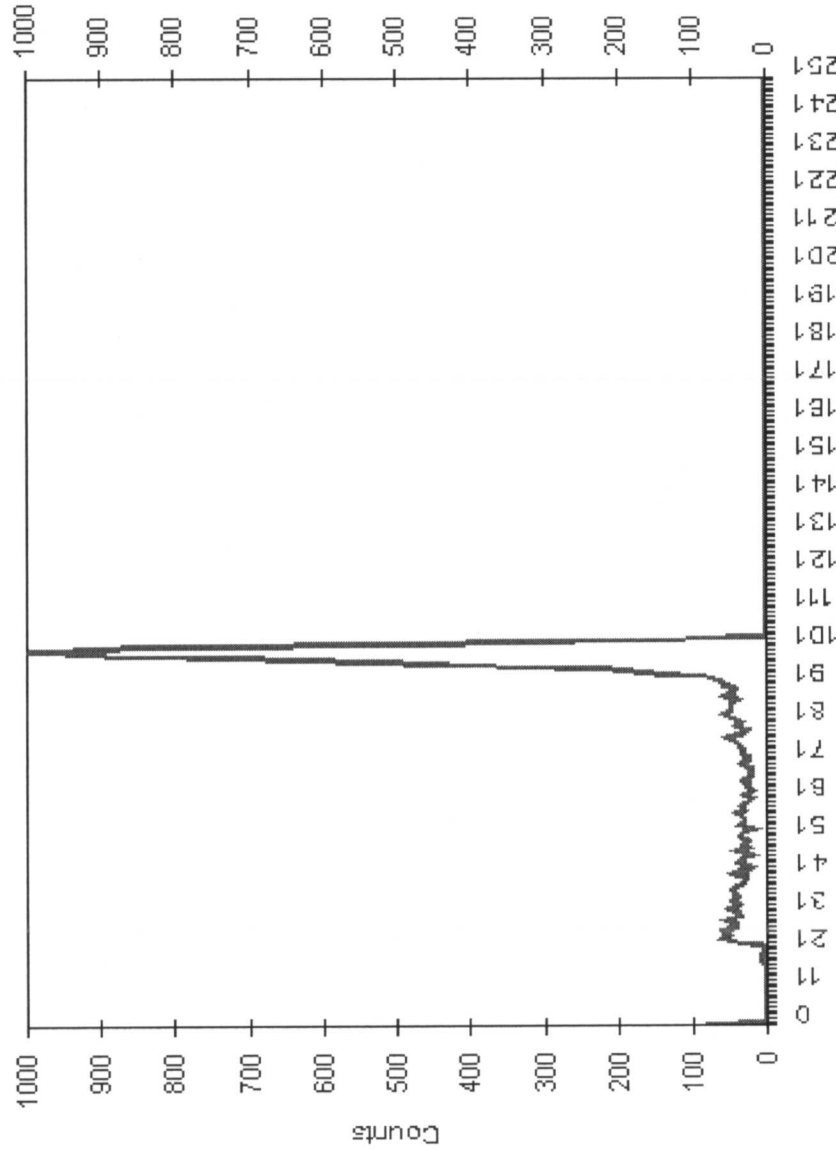
LND, INC.

Cust P.O.# 4500099484
Tube Type 252266
Serial Number 387534
Oper Volts 916
Volt Range 1320 - 1570
FWHM 4.68

LND Job# 10818-00
Source Pu-Be
Plateau Slope(%/100V) <3
PulseHeight(Volts) 1mV
Charge/Pulse 1.0E-13
Date 12/21/10

E-Mail: info@lndinc.com Web Site: <http://www.lndinc.com>
3230 Lawson Blvd., Oceanside NY 11572 Phone:(516) 678-6141 Fax:(516) 678-6704

GSI TUBE



Channels

Entrance Window

Window Material N/A
Areal Density(mg/cm²) N/A
Thickness(inches/mm) N/A

Exit Window

Window Material N/A
Areal Density(mg/cm²) N/A
Thickness(inches/mm) N/A

Gas Filling He3, Co2
Gas Press(Torr) 7600
Connector Type SHV